

CELEBRATE ✦ RECREATE ✦ ELEVATE



2024 PRICING FOR EVENT CENTER (exclusive of lodging)



**UP TO
4 HOURS**
\$1,500

**FULL
DAY**
\$2,500

**FULL
WEEKEND**
\$5,000

**FULL
WEEK**
\$7,500

Custom packages available upon request; discounted pricing for veterans, first responders and non-profit organizations

Includes:

- Private park along the springs
- Indoor pavilion with AV system, kitchen & 3 bathrooms (90 seating capacity)
- Outdoor event tent (90 seating capacity)
- Music stage, dance floor, outdoor patio & fire pit
- Historic building structures
- Up to 150 white folding chairs
- White folding tables (round and rectangular)
- Venue Coordinator during entire event
- Parking for up to 75 cars

Add Ons:

- Chair cover rentals
- Table linen rentals
- Portable PA system rental
- Inquire for additional decor availability

RESERVATION POLICY:
50% paid with signed contract.
Balance due six months prior to event.

CANCELLATION POLICY:
All payments are non-refundable.

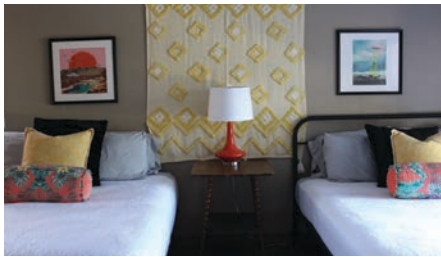
Pricing beyond 2024 upon request.



LODGING INFORMATION

Accommodations for up to 86 people | Pricing varies by season
Find individual descriptions & photo gallery on our website.

TOTAL: 27 bedrooms | 30 queen beds | 4 double beds | 2 twin beds | 8 futons



CABINS

CABIN 1:

2 Bedrooms | 2 Full Bathrooms | 2 Queen Beds, 1 Futon

CABIN 2:

2 Bedrooms | 2 Full Bathrooms | 2 Queen Beds, 1 Futon

CABIN 3:

2 Bedrooms | 2 Full Bathrooms | 2 Queen Beds, 1 Futon

CABIN 4:

2 Bedrooms | 2 Full Bathrooms | 2 Queen Beds, 1 Futon

CABIN 5:

2 Bedrooms | 2 Full Bathrooms | 2 Queen Beds, 1 Futon

CABIN 6:

1 Bedroom | 1 Full Bathroom | 1 Queen Bed

CABIN 7:

2 Bedrooms | 2 Full Bathrooms | 2 Queen Beds, 1 Futon

CABIN 8:

2 Bedrooms | 2 Full Bathrooms | 2 Queen Beds, 1 Futon

CABIN 9:

2 Bedrooms | 2 Full Bathrooms | 2 Queen Beds, 1 Futon

RANCH HOUSE

4 Bedrooms | 3 Full Bathrooms | 6 Queen Beds, 2 Singles

ROAD HOUSE

3 Bedrooms | 2 Full Bathrooms | 4 Queen Beds | 2 Double Beds

FARM HOUSE

3 Bedrooms | 2 Full Bathrooms | 3 Queen Beds, 2 Doubles



EVENT SPACES

The Spring Side

- Uncovered Outdoors
- 150 Seating Capacity
- Accessible by foot or cart
- Grass Lawn
- String Lights
- Portable Sound System
- Bathrooms via The Pavilion



The Pavilion

- Indoors
- 90 Seating Capacity
- Catering Kitchen
- Large Flat Screen TV
- AV System
- 3 Full Bathrooms
- Ceiling fans
- Central A/C



The Event Tent

- Covered Outdoors
- 90 Seating Capacity
- ADA ramp
- Concrete Floors
- String Lights
- Portable Sound System
- Bathrooms via The Pavilion



Additional Entertainment Areas

- Covered music stage for live band or DJ
- Outdoor dance floor
- Outdoor patio and tables
- Historic building structures